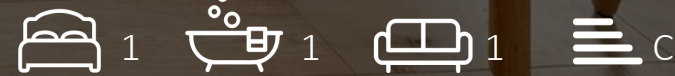


STOREYS

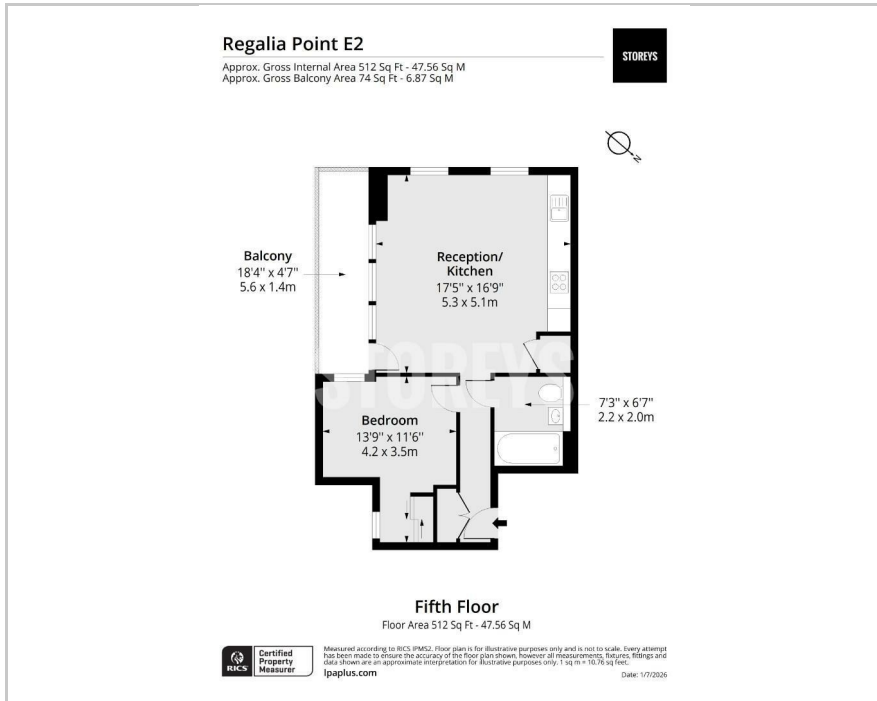


30 Palmers Road, London, E2 0FQ

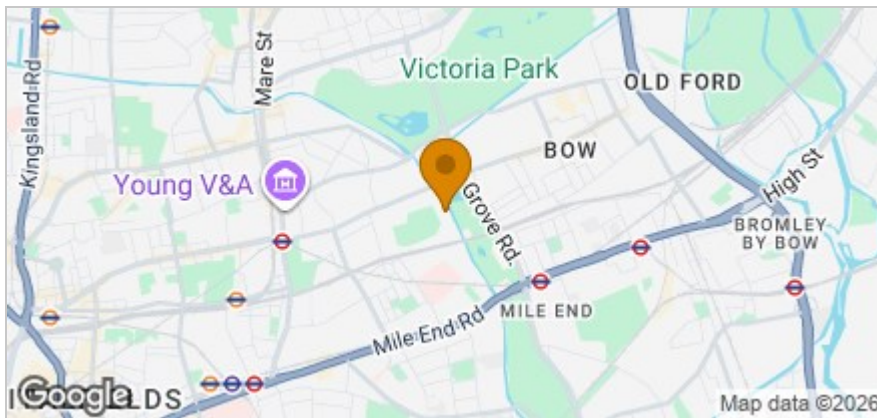
£2,600 Per month



Floor Plan



Area Map



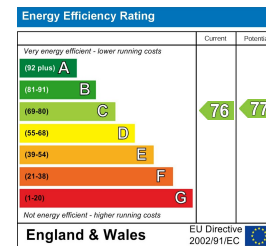
Accommodation

- Stunning Panoramic Views Across Mile End Park, Regent's Canal & The London Skyline
- Fifth-Floor Apartment With Lift Access
- Large Private Balcony
- Bright Open-Plan Living Space
- Moments from Victoria Park and Regent's Canal
- Contemporary Fully Integrated Kitchen
- Stylish Modern Bathroom
- Roman Road Market & Victoria Park Village
- Boutique Shop, Canal Side Cafes, Traditional Pubs
- Excellent Transport Links To The City, Canary Wharf & Shoreditch

Viewing

Please contact our Storeys of London Office on 0207-096-0666 if you wish to arrange a viewing appointment for this property or require further information.

Energy Efficiency Graph



These particulars, whilst believed to be accurate are set out as a general outline only for guidance and do not constitute any part of an offer or contract. Intending purchasers should not rely on them as statements of representation of fact, but must satisfy themselves by inspection or otherwise as to their accuracy. No person in this firm's employment has the authority to make or give any representation or warranty in respect of the property.